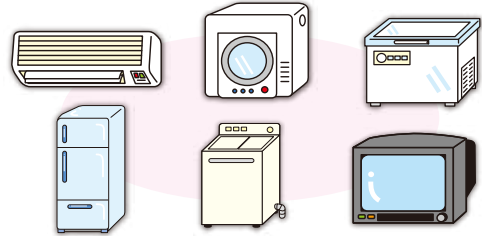


Things not collected or received by the city.

Household Appliances that Fall Under the "Household Appliance Recycle Act"

Products that fall under this category.
Refrigerators, Freezers, Washing Machines,
Drying Machines, Televisions,
Air Conditioners (Outside Air Conditioners)

※ These items cannot be put out **even if broken down**.
There are also cases where the cost of recycling
is more expensive if the item is broken down.



- **Disposal Method 1** Ask an electronics retailer to do it.
You'll have to pay the **recycle and transportation fees**.
 - ◇ Clean Hyuga 0982 - 53 - 3109
 - ◇ Kuroda Kogyo 0982 - 55 - 0055
 - ◇ Hyuga Eiseikosha 0982 - 54 - 5111
 - ◇ Beppu Kanamonoten 0982 - 52 - 4768
- **Disposal Method 2** Use one of the licensed contractors listed on the right.
You'll have to pay the **recycle and transportation fees**.
※ You may not use unlicensed contractors.
- **Disposal Method 3** Bring your items directly to the following designated processing center.
You'll have to pay the **recycle fees**.
※ Please confirm the business hours of your designated processing center beforehand.
After paying the recycle fee at your nearest Post Office, you will receive a Household Appliance Recycle Ticket.
Please bring this to the designated processing center when you deliver your item.

◇ Nobeoka Daikyu Transportation TEL:0982 - 37 - 6431 2923, Totorocho 6-chome, Nobeoka City
(Kurume Transportation site)

【Inquiries about recycling fee】

Household appliance recycle ticket center

☎ 0120 - 319640

URL : <http://www.rkc.aeha.or.jp>



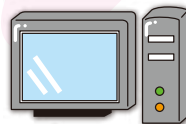
Be Careful!

If you use unlicensed contractors,
then you may run into **higher fees**
and other problems.

Personal Computers

※ Peripherals such as **Mouses**,
Keyboards, **Printers** fall outside of
this category.
They are "Unburnable trash" .

Products that fall under this category.
Notebook Computers
Desktop Computers (Body Only)
Computer Displays (CRT, LCD)
Display Type Computers



● **Disposal Method 1** Manufacturers
Contact the manufacturer's
"PC Recycle Reception Window" .

● **Disposal Method 2** If Self-made
Contact to the Computer 3R Promotion
Association.

【Inquiries about computer disposal】

the Computer 3R Promotion Association

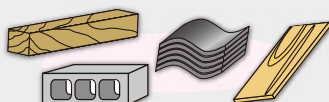
☎ 03 - 5282 - 7685

URL : <http://www.pc3r.jp>



※ Personal Computers with the mark on the left will be collected by the manufacturer
without any fees. However, **computers without the mark have mandatory recycling fees**.

Industrial Waste



Industrial waste can not be processed by the city.

Please contact the industrial waste disposal contractor (for a fee).

Some trash (Tatami, Tiles, Block scraps etc) that is suspected to
be industrial waste require on-site confirmation, even if it is being
issued from home.